



Collabora Productivity

Latest improvements in PPTX support

By Szymon Kłos

Consultant Associate Software Engineer
at Collabora Productivity

szymon.klos@collabora.com

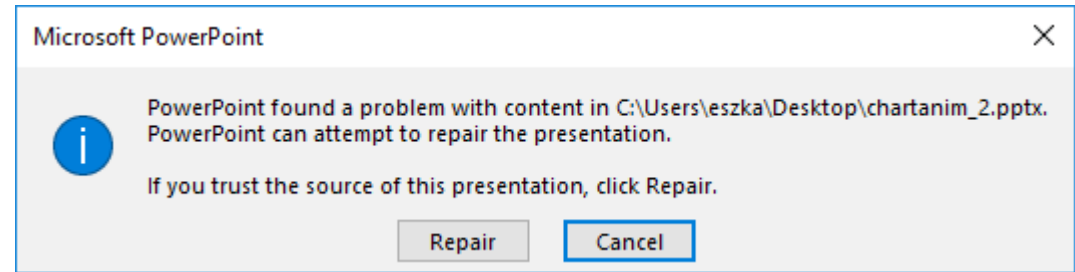
+SzymonKlos

Agenda

- Export of group shapes
 - Export of embedded videos
 - Preservation of custom XML and VBA stream on export
-

- Broken files
- Issues around animations
- Compatibility of animation time
- Text layout – linespacing, auto size
- Theming
- Charts labels
- Text effects – text on arc

Broken files



- META Bug: tdf#104787 (25 in total)
- Issues found mostly by: Aron Budea and Xisco Faulí
- Solved by: Szymon Kłós, Mark Hung, Jan Holesovsky, Tamás Zolnai
- MSO error after export using LibreOffice
- Mainly missing required elements in the xml structure
- Sometimes incomplete elements
- Big number of bugs related to animation

```
OpenParentElement()  
..  
WriteContent() ← nothing  
here  
..  
CloseParentElement()
```

Issues around animations

Root cause:

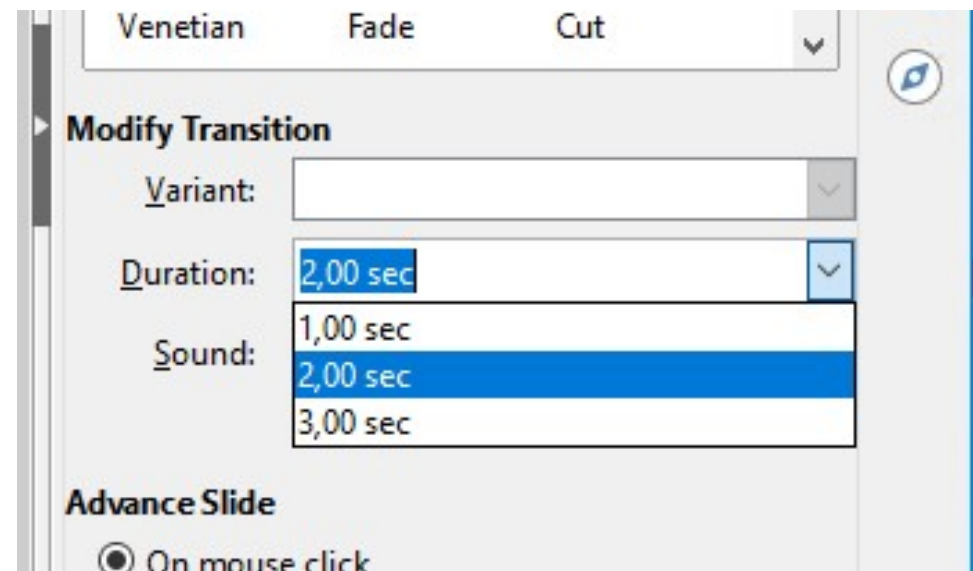
- Lack of different value type support (string, floating-point)
- Universal element **<p:to>**
(color, position, time, etc. ...)

Improved animation or slide transition types:

- Zoom
- Color transform
- Grow-shrink
- Motion
- And more ...

Compatibility of animation time

- Custom transition time import & export (tdf#115394)
- Changed imported standard values to match with MSO:
 - Fast – 0.5s
 - Medium – 0.75s
 - Slow – 1s
- 0s -> 0.01s



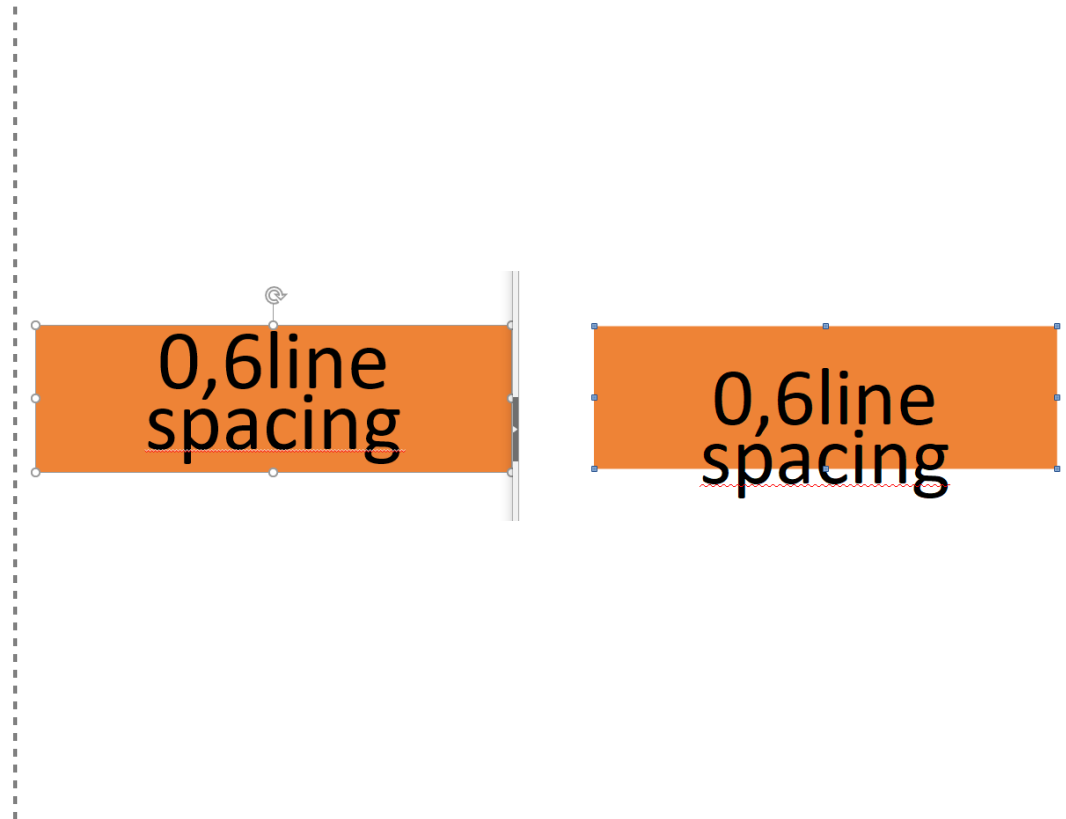
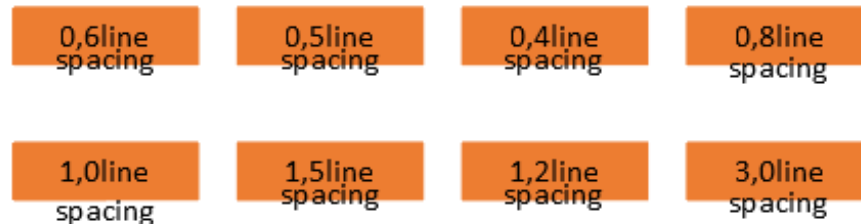
Text layout - linespacing

- Tdf#114628 - incorrect linespacing in text boxes

Correct:



Before fix:



Text layout - fit text size to match frame

- Automatic size of text depending on text box size
- On export save the “fontScale” value as preferred scaling factor for compatibility (MSO recalculates this value itself but after first edit)
- LO doesn't use that value – layouting is always performed

Lorem ipsum dolor sit amet, consectetur adipiscing elit. Maecenas semper aliquet quam sed sollicitudin. Suspendisse potenti. Sed feugiat augue congue, scelerisque nulla sit amet, consectetur erat. Curabitur at mattis leo. Phasellus sodales tortor diam, vel auctor lacus tempus porta. Curabitur commodo, metus vel fringilla mollis, nisl mi facilisis leo, tempor condimentum lorem orci convallis erat. Vivamus accumsan nibh at ultrices sollicitudin.

Lorem ipsum dolor sit amet, consectetur adipiscing elit. Maecenas semper aliquet quam sed sollicitudin. Suspendisse potenti. Sed feugiat augue congue, scelerisque nulla sit amet, consectetur erat. Curabitur at mattis leo. Phasellus sodales tortor diam, vel auctor lacus tempus porta. Curabitur commodo, metus vel fringilla mollis, nisl mi facilisis leo, tempor condimentum lorem orci convallis erat. Vivamus accumsan nibh at ultrices sollicitudin.

Theming

- tdf#84205 – Document color themes were implemented
- Surprise in the code: very big chunk of PPTX document was hardcoded and placed in every document on export
- Added code to import & preserve color themes in the output file
- We don't have any UI to define color themes in the document

```
#define SYS_COLOR_SCHEMES "      <a:dk1>\
  <a:sysClr val="windowText" lastClr="000000"/>\
</a:dk1>\
  <a:lt1>\
    <a:sysClr val="window" lastClr="FFFFFF"/>\
  </a:lt1>
...
```


Before

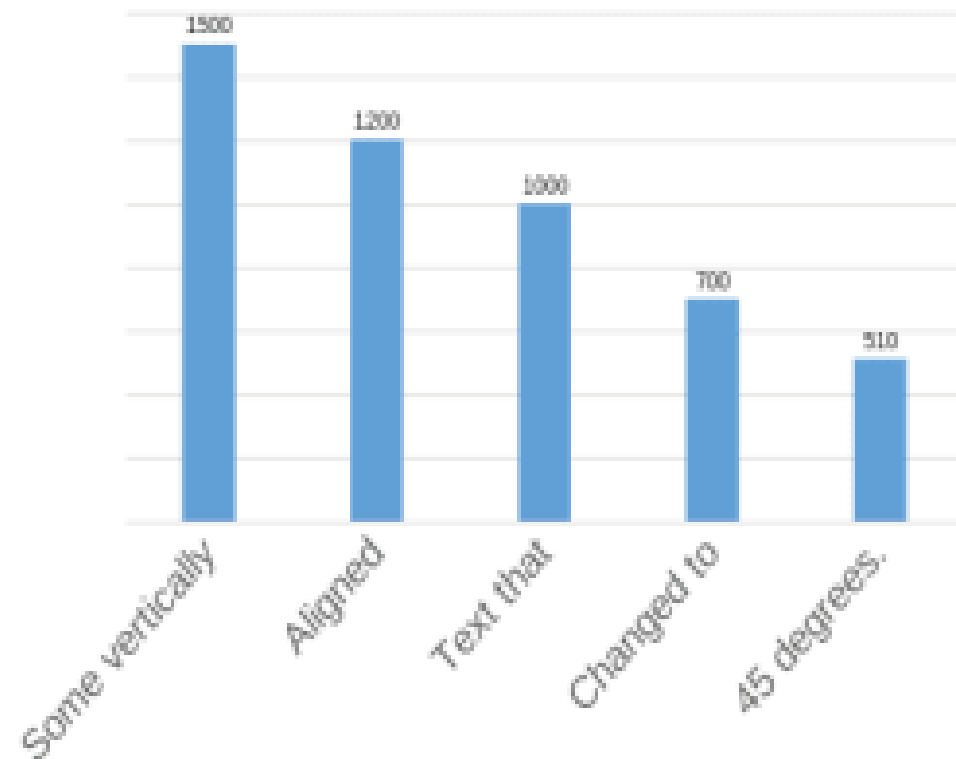


Several PPTX Issues Fixed by Collabora

This text was vertically shifted before the issue was fixed.

See the wrong colors previously...

Now fixed!



After

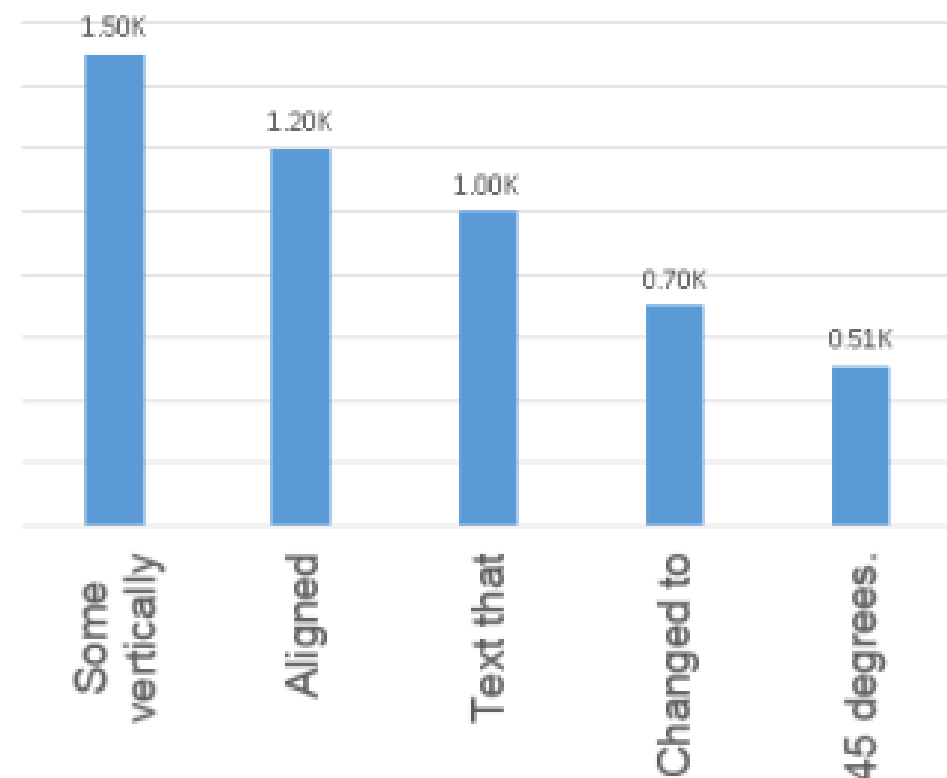


Several PPTX Issues Fixed by Collabora

This text was vertically shifted before the issue was fixed.

See the wrong colors previously...

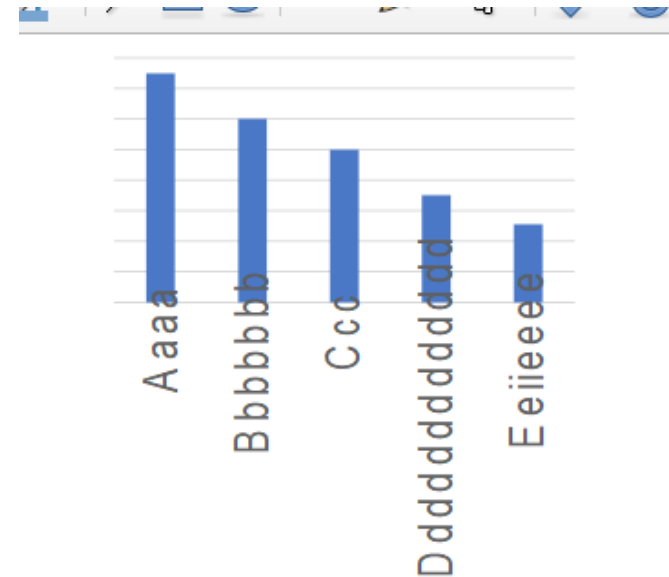
Now fixed!



Charts labels

Few issues here:

- Wrong position (enum)
- Shorting wasn't supported
- Labels were unformatted
- Fields were not supported:
 - Row, Column, Value, etc. ...



Complex chart labels

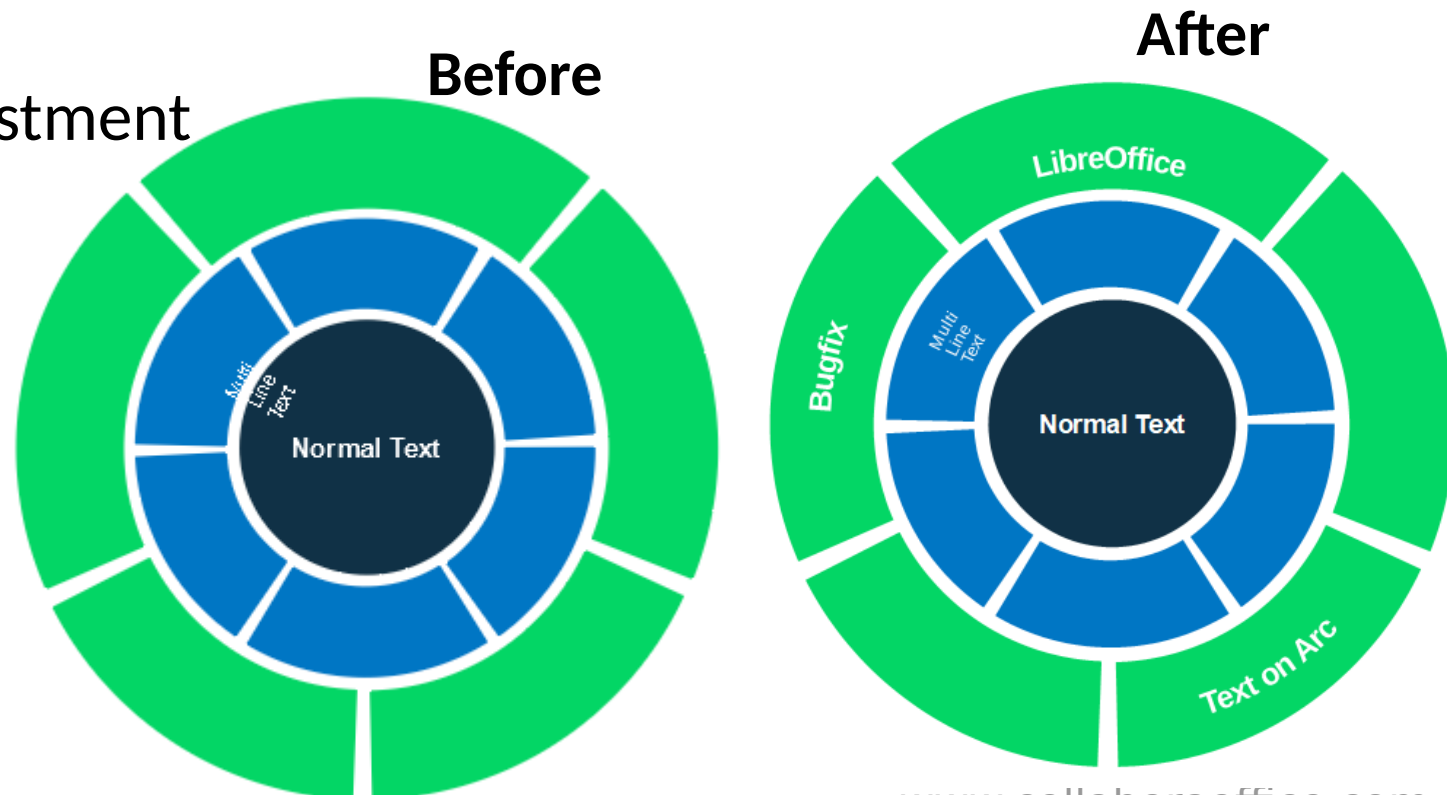
- Text is now formatted
- Multiple lines are supported
- Fields
 - Value
 - Column



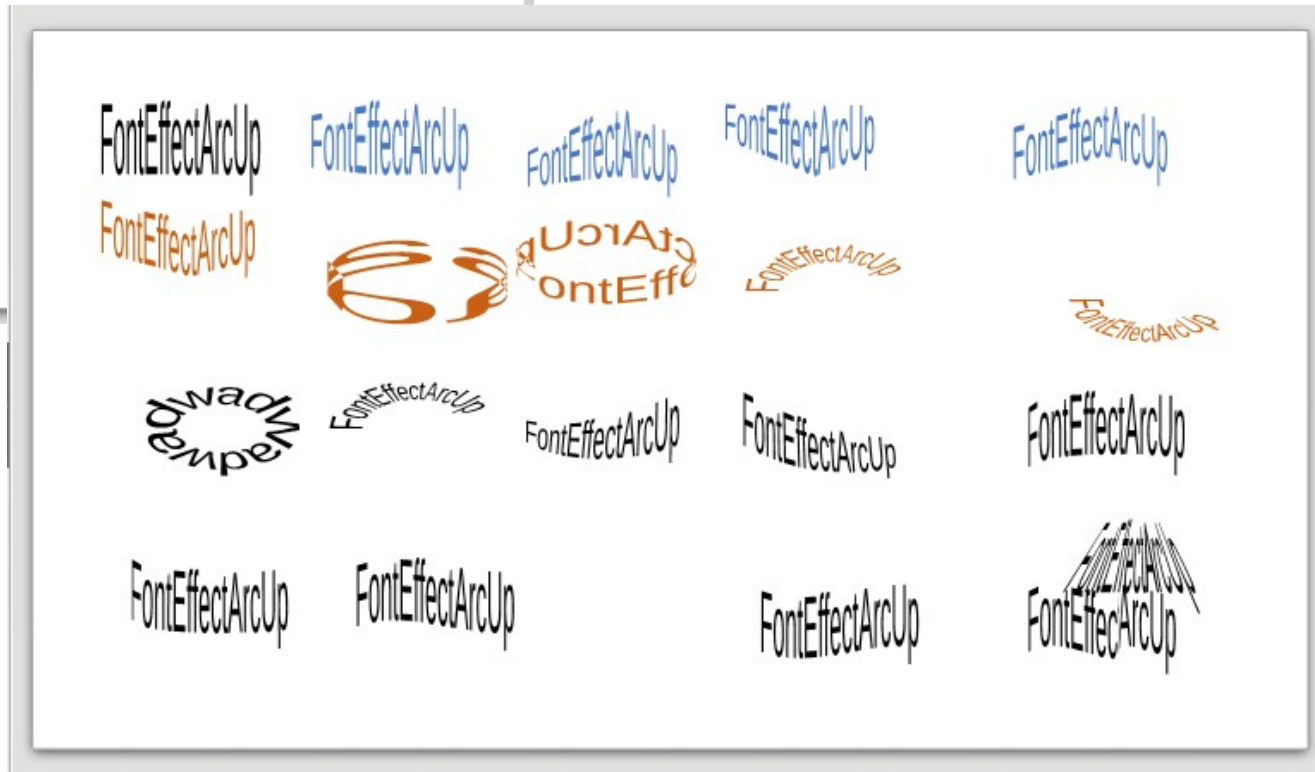
Text effects - text on arc

- There is a font transformation option which may be applied for a text box
- It was shown as a plain text - not curved as you can see below:

- Complex adjustment
- Fontwork
- tdf#116350



Preset text transformations





Collabora Productivity

Thank you!

By Szymon Kłos

szymon.klos@collabora.com

+SzymonKlos